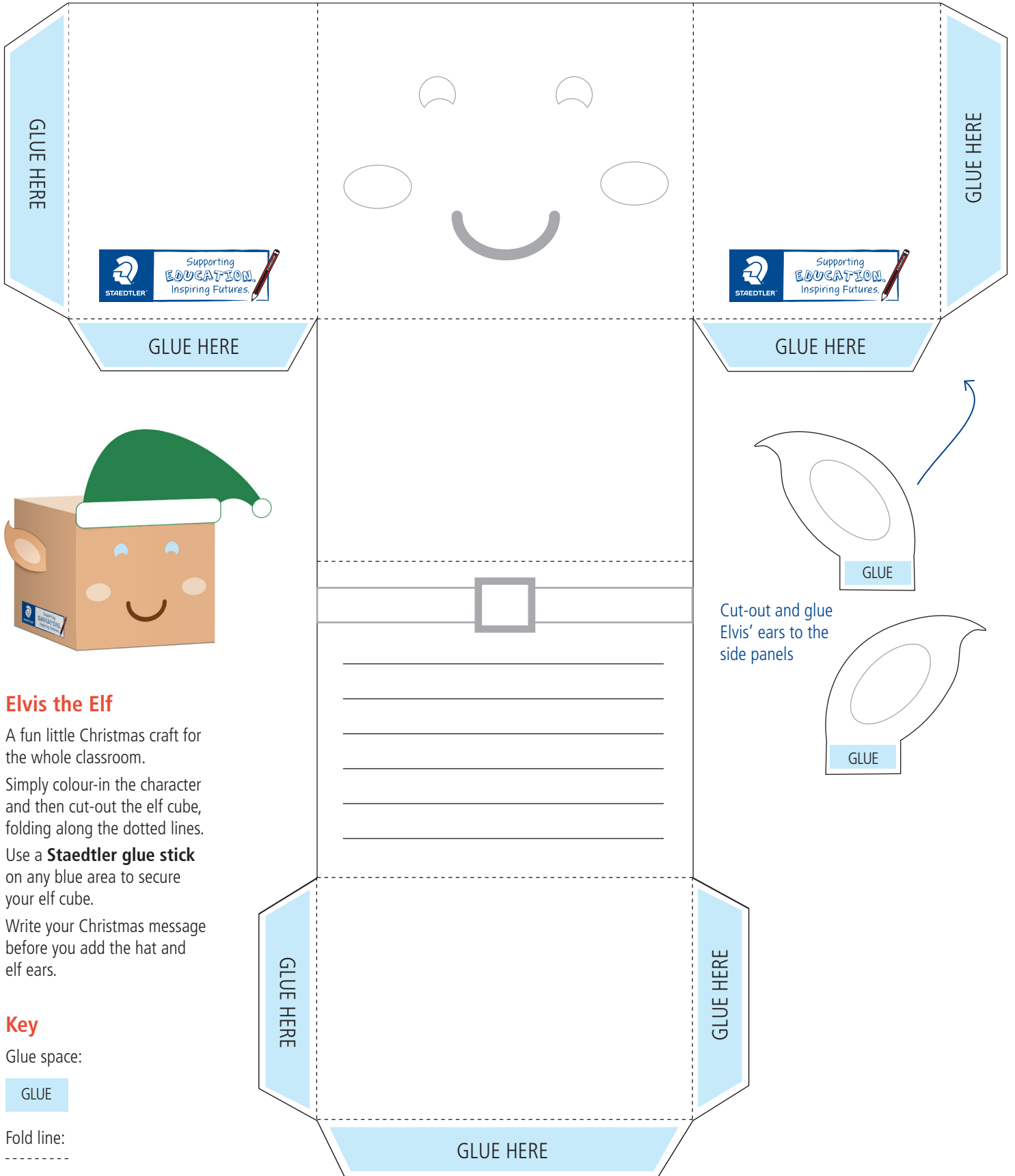
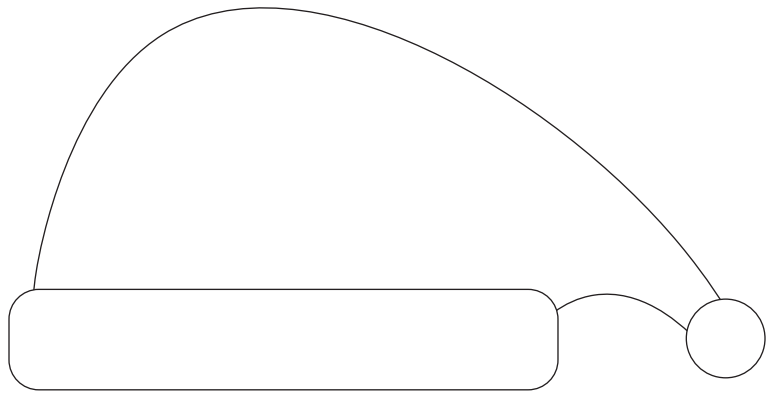


# Elvis the ELF



## Elvis the Elf

A fun little Christmas craft for the whole classroom.

Simply colour-in the character and then cut-out the elf cube, folding along the dotted lines.

Use a **Staedtler glue stick** on any blue area to secure your elf cube.

Write your Christmas message before you add the hat and elf ears.

## Key

Glue space:

GLUE

Fold line:



Cut-out and glue  
Elvis' ears to the  
side panels